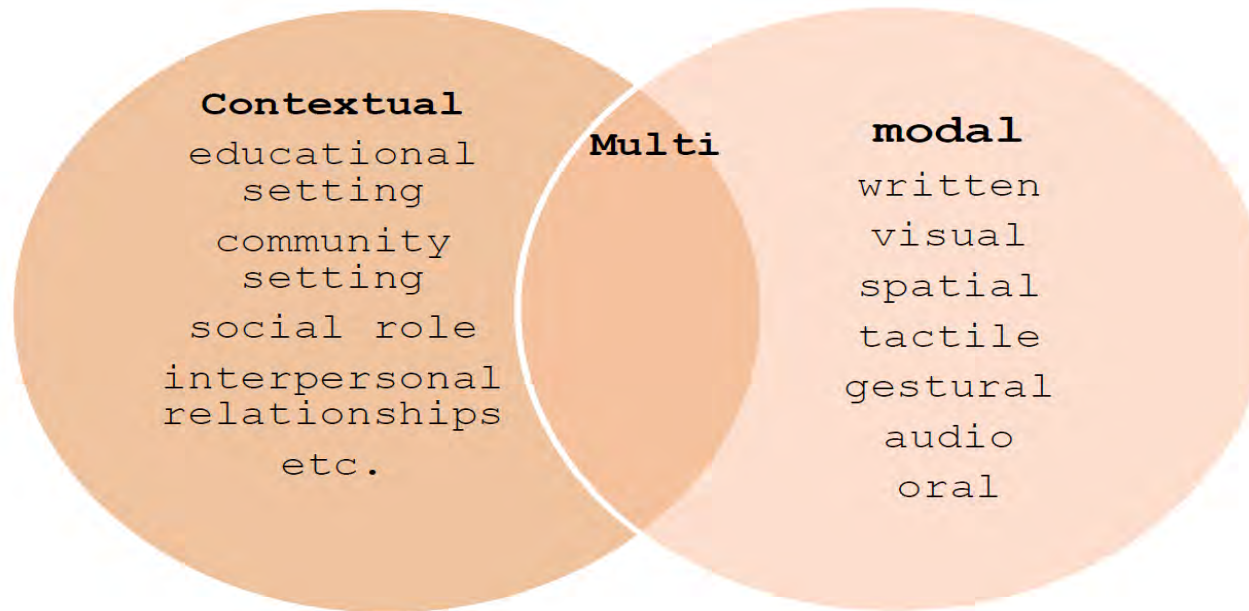


---

# Using Moodle

Gilda and Hilary

# Contemporary Literacies



Kalantzis & Cope (2012,p.2)

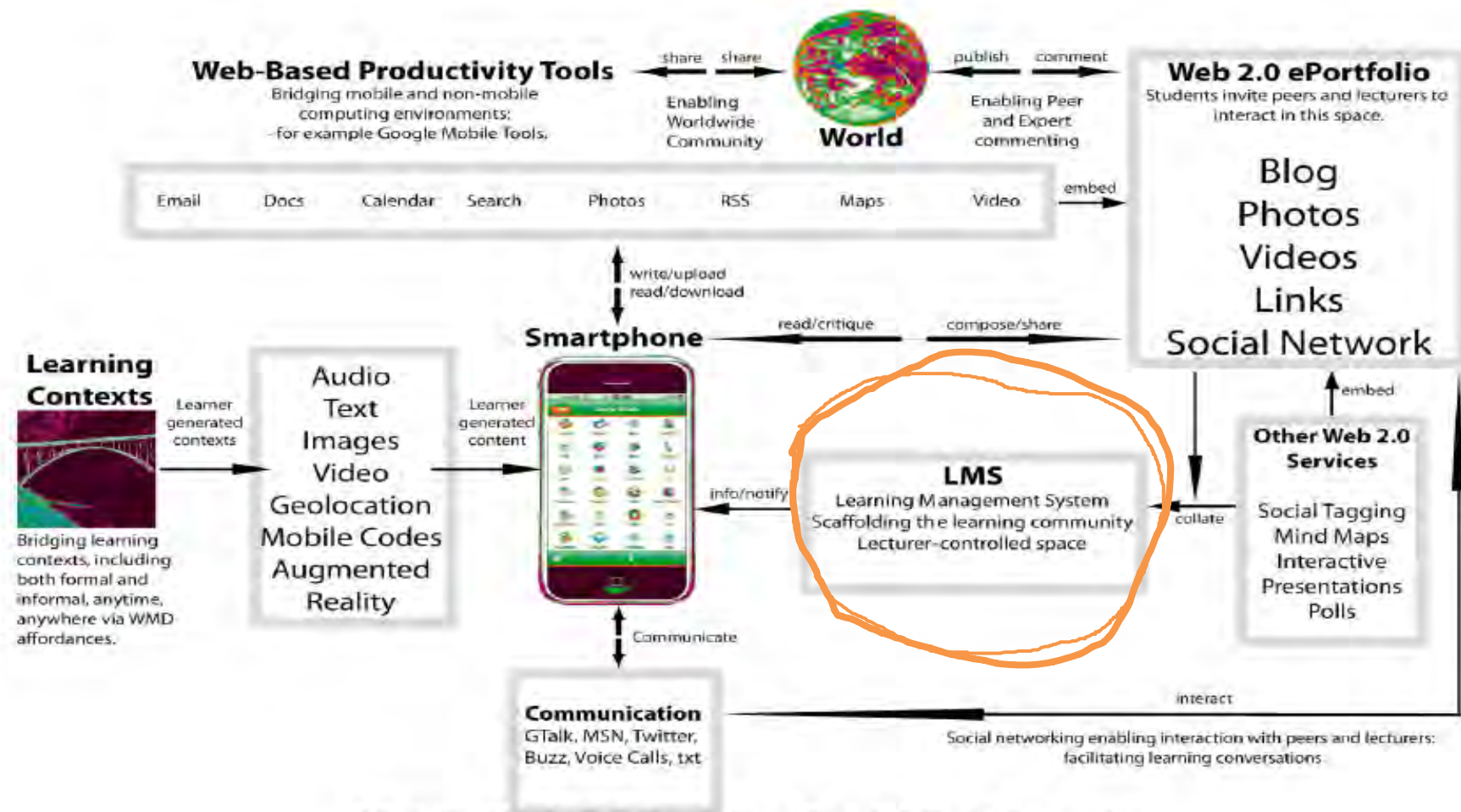
---

# Digital Literacy



---

**new learners  
+  
new teachers**



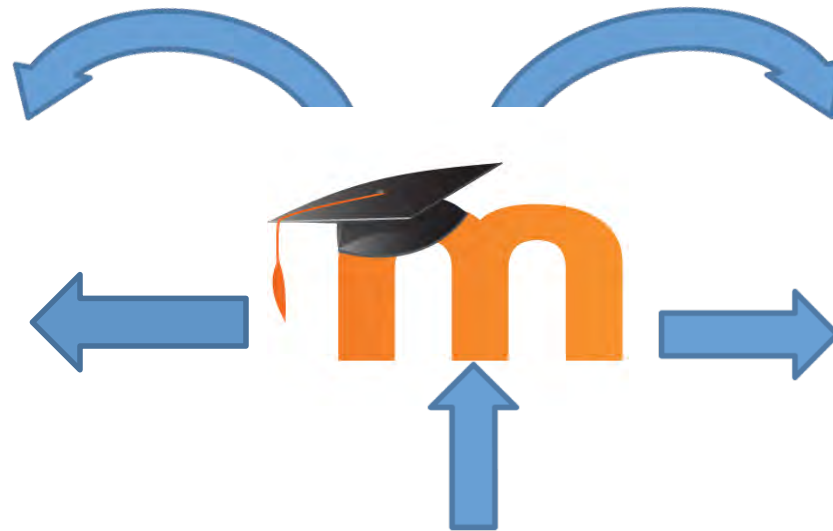
Mobile Web 2.0 Enabling Social Collaboration

Cochrane (2014, p71)

# Moodle

**ASSESSMENT**  
-Quizzes

**LESSONS**  
-written  
-video  
-scorm  
-websites



**REPOSITORY**  
-sharing of  
resources

**FEEDBACK**  
-surveys  
-forums

NMIT staff and  
students



Learning Skills and Assessment Unit



Hilary

---

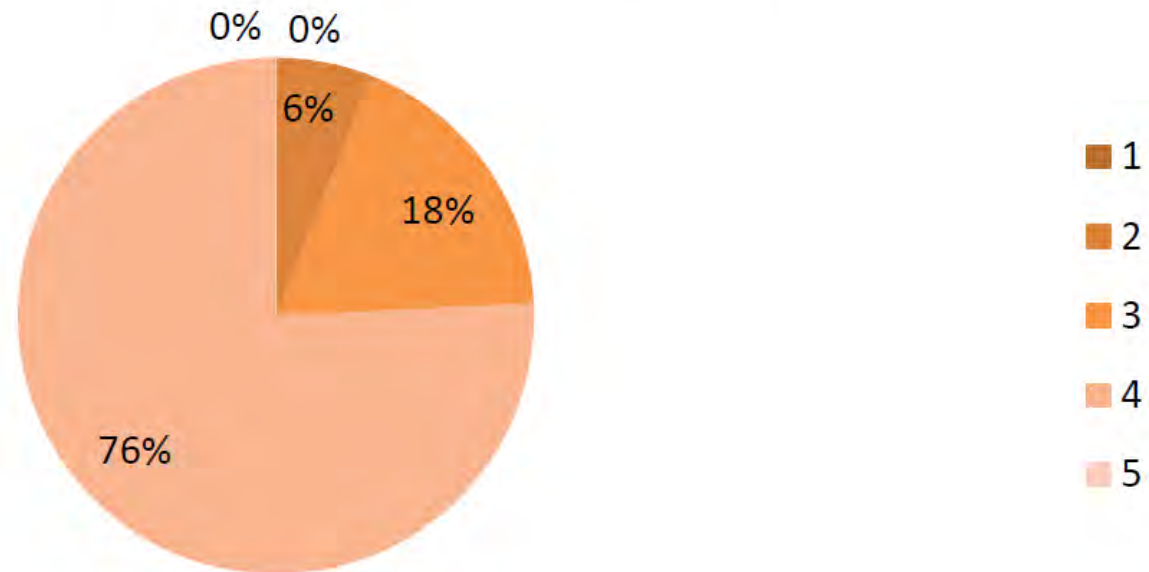
Two roads diverged in a yellow wood  
And sorry I could not travel both

by Robert Frost

---

**Examined online unit 'Apply  
critical thinking techniques'  
from a language and literacy  
point of view**

## Cert III in Visual Arts ACSF Literacy breakdown





# Language and Literacy Strategies

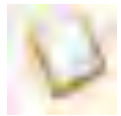
**'Content and theories without  
the magic of teaching and  
learning means nothing'**

(Edmin, 2013)



# Language and Literacy Strategies

Regularly change the literacy  
mode



**Voice**



**Visuals**

**Chat, Blog, Wiki**



**Learning Skills and Assessment Unit**



# Language and Literacy Strategies

Pre-teach technical words, new  
vocabulary and ideas



**Glossary**



# Language and Literacy Strategies

## Scaffolding



**Forums**

**Exemplars**

**Online reading strategies**



**Learning Skills and Assessment Unit**



# Investigation

- Bricklaying student
- Male
- Low literacy and numeracy skills
- Support given in class and individually

(This year, more than 50% of bricklaying students achieved ACSF levels below level 3, in both literacy and numeracy)



Learning Skills and Assessment Unit

---

Can Moodle be used to create assessments which are suited to learners with special educational needs?

# LLN Strategies

- Photos
- Videos
- Tables
- Quizzes
- Instant feedback
- Intuitive format





# Benefits

- Bank of quiz questions
- Engage students
- Self correcting
- Training and assessment
- Student work can be uploaded
- Add web links

# Insights

- **Time**
- **Collaboration**
- **Self directed learning**
- **Students' learning styles**
- **Access and Communication**